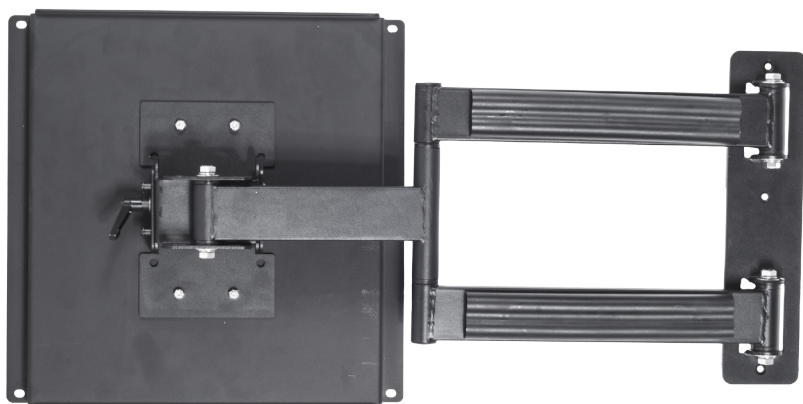




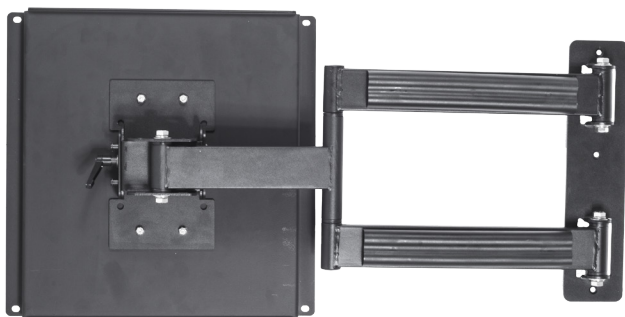
NXG-4250/4650

Single Arm Mount Installation Manual



What's included in the box:

1- Armt Mount



Miscellaneous Hardware Bag Contents

3- 5/16" Flat Washers

3- 5/16x 2 1/2" Lag bolts

3- 5/16" Lag Shields



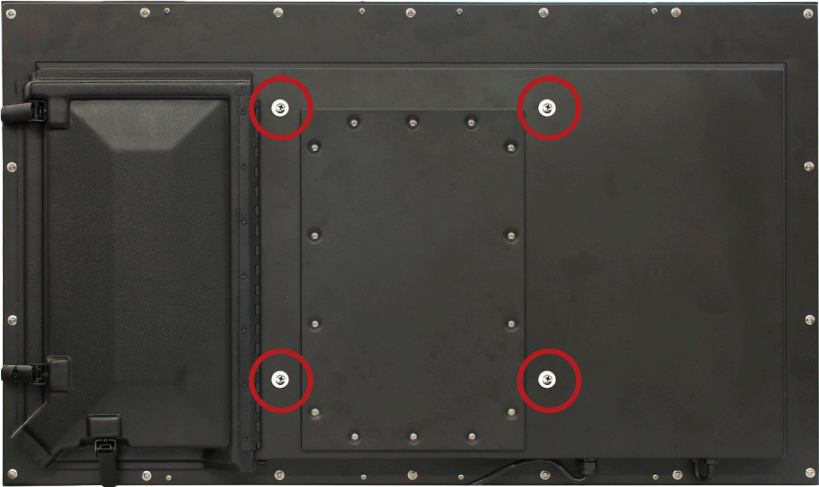
Surface Preparations:



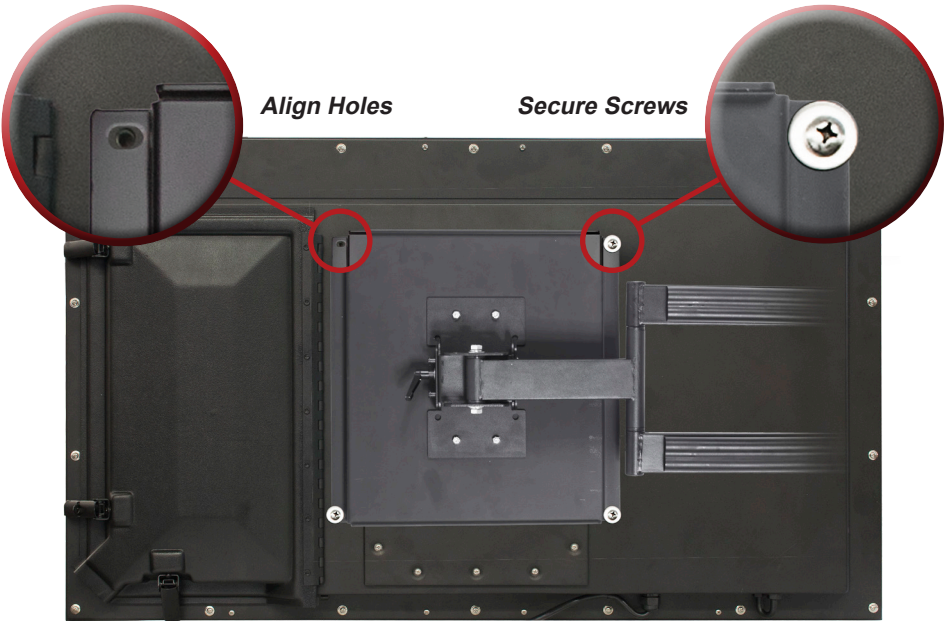
Lay blanket down on flat sturdy surface. Run hand over surface to make sure there are no sharp object or protrusions, when the television is laying down.



Lay television down, viewing side down on blanket.



Remove and set aside the 4 screws and washers as indicated with the red circles.



Align 4 holes of the mounting plate with the holes on the back of the television. Reinsert the screws and washers from previous step and tighten securely.



Mounting

Have a friend assist you with the mounting process.

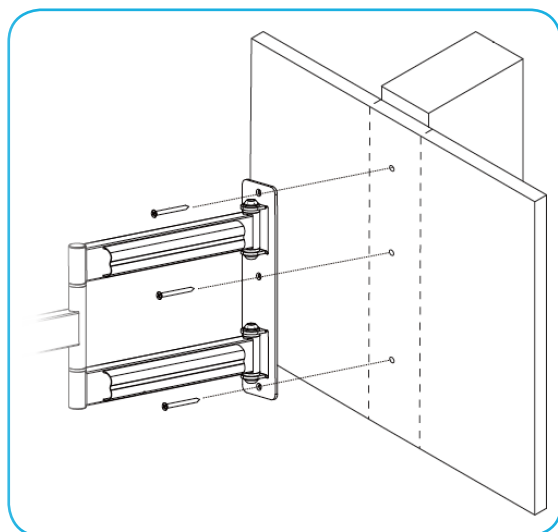
The arm mount **must be mounted to a wood stud / post / or on masonry**. Use a high quality stud sensor to locate a stud. It is a good idea to verify where the stud is located with an awl or thin nail. Pre-drill a 2.5" deep hole at the desired height in the stud using a 3/16" drill bit. Make sure the hole is in the center area of the stud. Use this location for the middle hole in the Wall Plate. Use the Wall Plate of the arm mount as a template to mark the location of the top and bottom holes. Make sure the Wall Plate is level and drill a 2.5" deep hole using the 3/16" drill bit in the marked locations. Attach the Wall Plate to the wall using three Lag bolts and three Lag Bolt Washers. Make sure the Wall Plate is oriented so the flat surface in the center of the plate is against the wall. See Figure 1 below.

Warning: DO NOT OVER TIGHTEN THE LAG BOLTS! Tighten Lag Bolts only until the Lag Bolt Washer is pulled firmly against the Wall Plate.

Note: The TV will be vertically centered on the Wall Plate once it is mounted.

FIGURE 1

For Anchoring Into



Masonry

Wood



Note: If mounting wall plate on to masonry first drill 1/2" pilot holes and insert lag bolt shields.

Do not remove the Tension Nuts.
Removing Tension Nuts may result in personal injury or property damage.



Congratulations you have successfully installed your single arm articulating mount. If you have any questions feel free to contact technical support (877) 475-9883 option 2.



