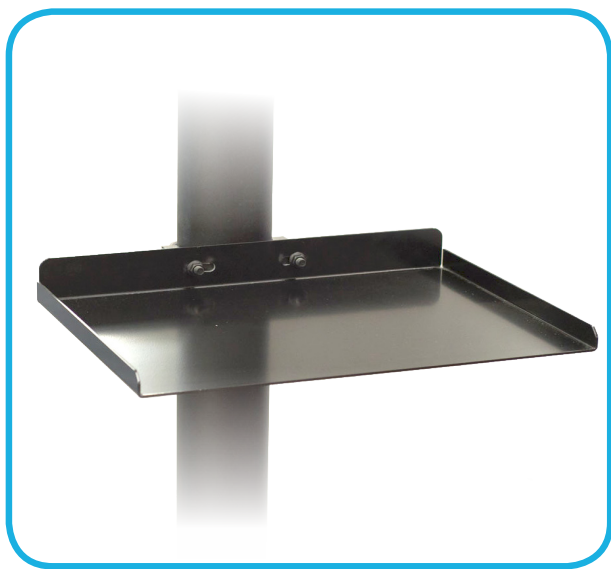




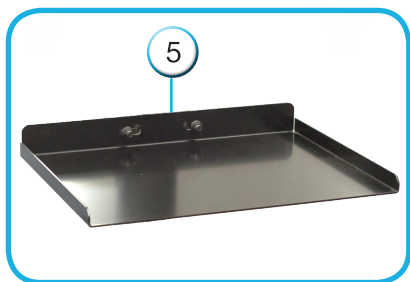
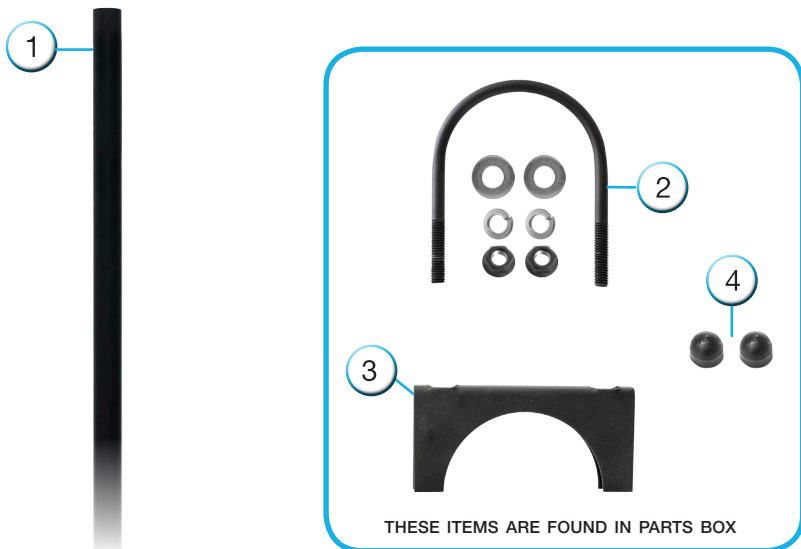
OUTDOOR TELEVISIONS

Cart Shelf Assembly Manual





Parts for Cart Shelf Assembly:



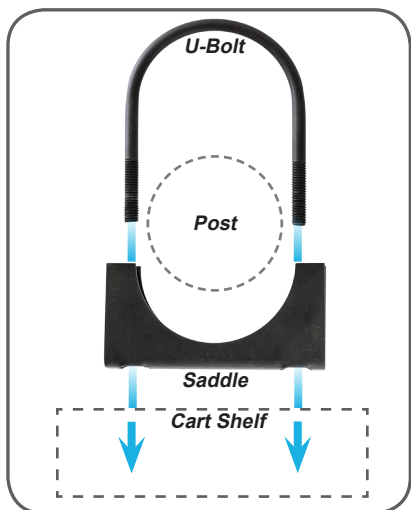
1. Previously assembled post: *Deck Post, In-ground Post, or Portable Cart*
2. 1- U-Bolt- (2) Flat Washers, (2) Lock Washers, (2) Powder Coated Nuts
3. 1- U-Bolt Saddle
4. 2 - Rubber Bolt Caps
5. 1 - Cart Shelf

Tools Required for Assembly:



Ratchet
with 9/16" Socket

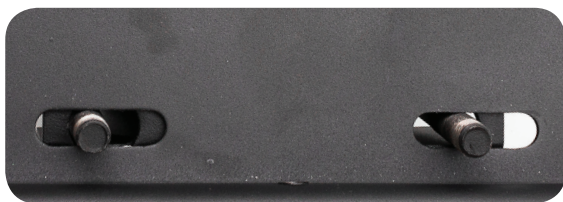
U-Bolt and Mounting Assembly:



Top View



U-Bolt should be hooked around the post and through the holes on the U-Bolt Saddles. This should be positioned at the approximate shelf height.



With U-Bolt and saddle in place, position and slide the cart shelf over the U-bolt ends.



U-Bolt and Mounting Assembly Cont.:

1. With the U-bolt threaded through the mounting holes, place stainless steel flat washers over the bolt ends.
2. Place stainless steel lock washers over bolt ends.
3. Thread black powder coated nuts over bolt ends and hand tighten.
4. Once positioned, level and tighten all U-bolt nuts.
5. Place rubber bolt caps over exposed bolt ends.



1



2



3



4



5



**You have now completed the cart assembly
of your Cart Shelf .**

